

# Property Brochure



## Plot **Tholaria**

# Plot Overview

Prime plot on the enchanting Island of Telendos that is directly facing the promenade with breathtaking Kalymnos views.

Discover an extraordinarily rare opportunity to own a 1,285.50 sq.m. plot on the idyllic car-free island of Telendos, with very limited availability of developable land, making available plots exceptionally scarce.

This exclusive plot comes with a building allowance of 514 sq.m., offering the perfect canvas to construct a boutique guesthouse or high-end holiday retreat in one of Greece's most magical settings.



# Values And Vision

## Why Invest in Telendos?

**Exclusivity:** Only a handful of plots are ever available on this tiny island.

**Tourist Magnet:** Telendos attracts visitors seeking tranquility, stunning landscapes, and authentic Greek charm.

**High Rental Demand:** Properties in prime locations enjoy strong occupancy rates.

**Future Appreciation:** Limited supply ensures long-term value growth.



Positioned directly in front of the main promenade, this plot sits at the epicenter of island life, surrounded by charming tavernas, bars and seaside cafés while maintaining a sense of privacy and exclusivity.

The location is unparalleled because it is just steps away from the crystal-clear waters of the Telendos pier, yet elevated enough to provide panoramic views of Kalymnos across the strait.

# Features

Despite its secluded charm, Telendos is easily accessible via frequent boat transfers from Myrties Port (Kalymnos), running every 30 minutes throughout the day. This makes the island a favorite for travelers seeking an authentic Greek island experience without sacrificing convenience.

This particular parcel is one of the last remaining rare lots located on the frontline of the port, ensuring strong appreciation potential and making it a once-in-a-lifetime investment to develop a boutique guesthouse or small hotel catering to seaside retreat with direct access to the island's unique promenade.

District:

**Telendos Island**

Plot Area:

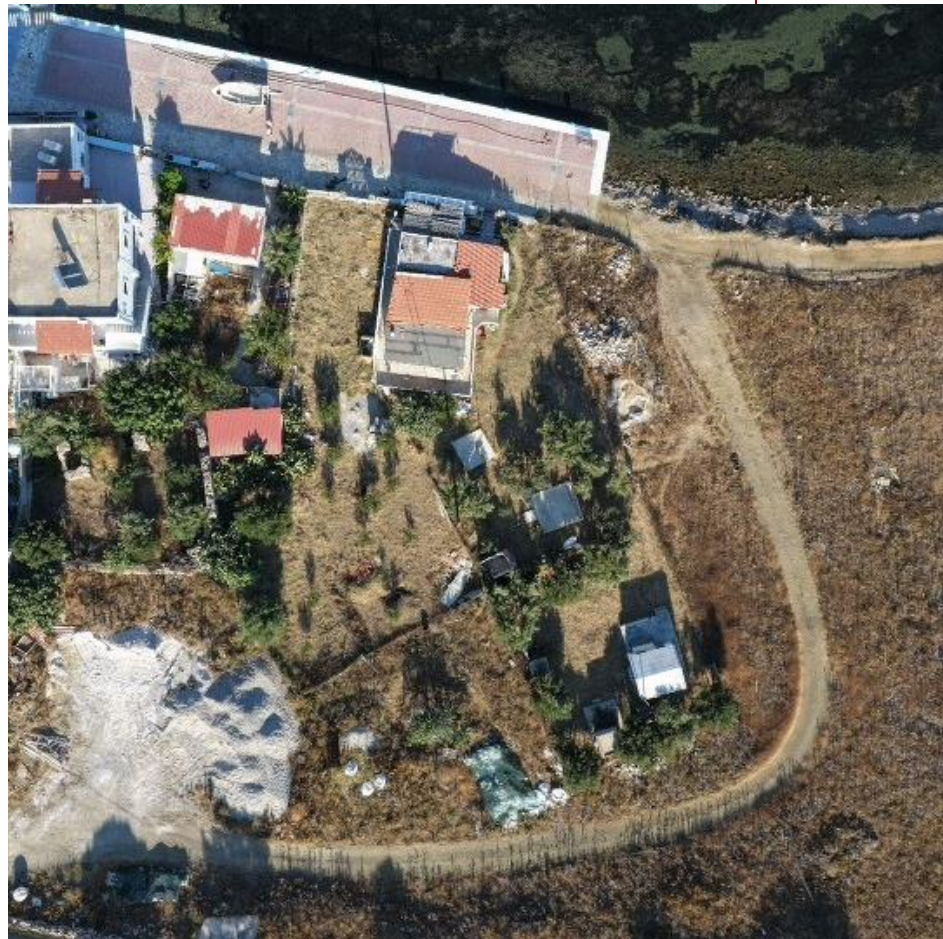
**1285.50 m<sup>2</sup>**

Building Allowance:

**514,00 m<sup>2</sup>**

Features:

**Facing the promenade**



# Map Location





# Let's Talk

For more information about the project, availability, or to arrange a meeting, please use the details below.

A member of our team will be happy to assist you.

## Contact

### Main Office

Kalymnos, Pothia 85200

### Mail

[info.ininvestments@gmail.com](mailto:info.ininvestments@gmail.com)

### Phone Number

+30 6940755776

