

Property Brochure



Design Concept

Apollon

Project Overview

The proposed double-storey summer house (150 sqm) is designed to maximize functionality, privacy and connectivity with the surrounding landscape.

The masterplan integrates dual access points; one from the private road (west elevation) leading to the garage and main living areas, and another from the public road (east elevation) providing direct circulation to the rooftop terrace and bedrooms. The design emphasizes indoor-outdoor living, natural light, and efficient spatial organization.

Ground Floor (Approx. 95 sqm):

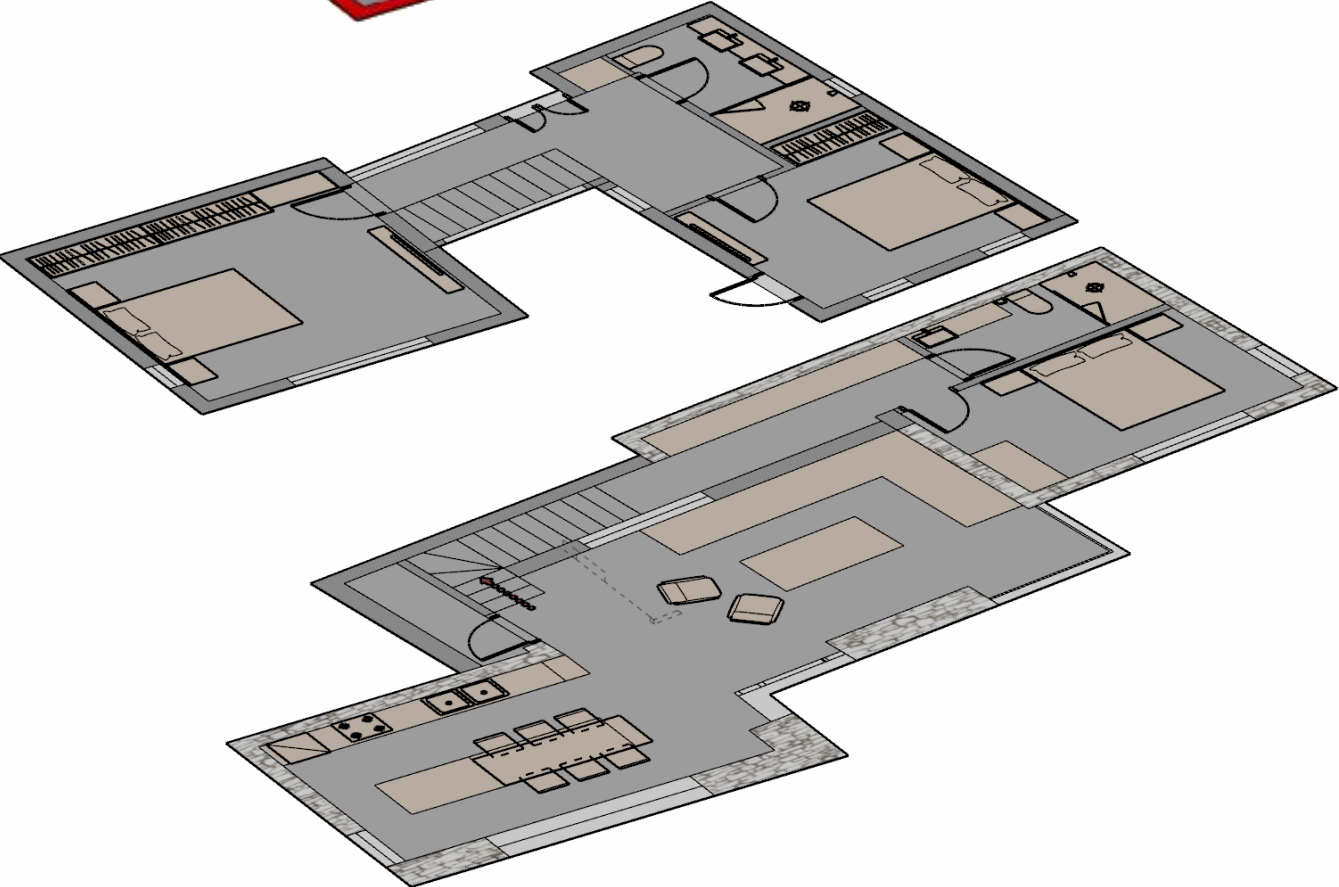
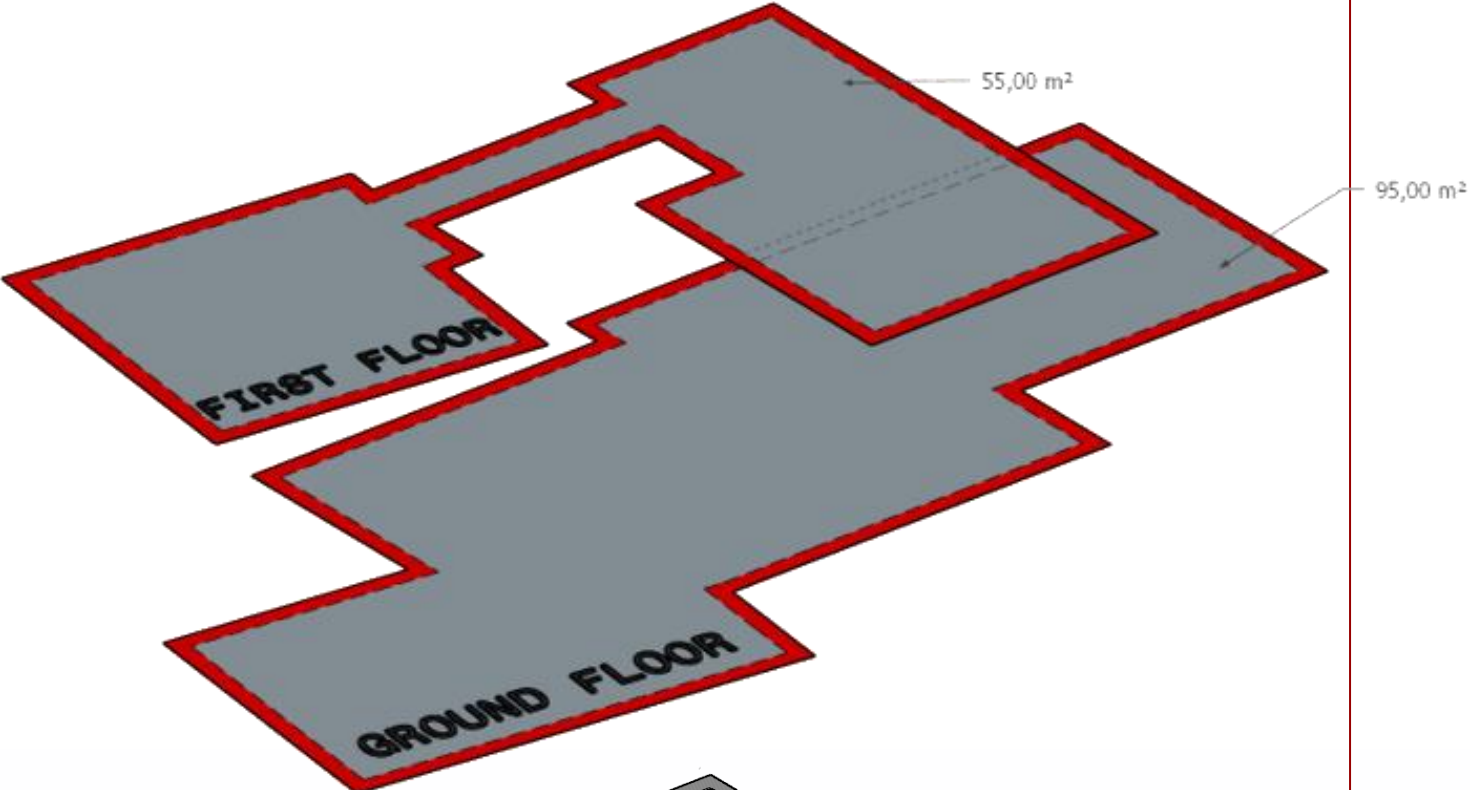
Open-Plan Living Area: Combining kitchen, dining and lounge with large glazed openings for natural light and Telendos Island views.

First Floor (Approx. 75 sqm):

Two Bedrooms with Ensuite Bathrooms designed for privacy, each with access to a shared terrace.



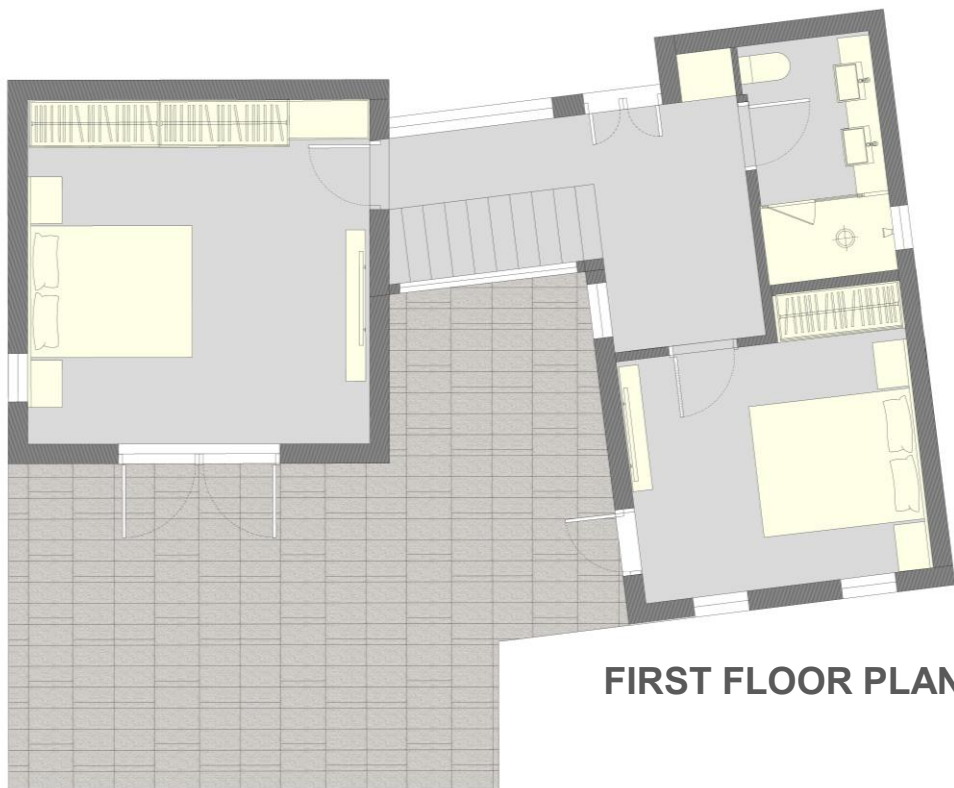
Diagrams



Floorplans



GROUND FLOOR PLAN



FIRST FLOOR PLAN

Perspectives



Features

The design balances privacy, accessibility, and leisure, making it an ideal summer retreat. The dual-access strategy optimizes the plot's potential while maintaining a seamless flow between indoor and outdoor spaces.

Key Features

Dual Circulation that ensures privacy for residents while allowing guest access to the rooftop which turns into a social space due to the shading creating by the pergola and the efficient yet functional layout, with ensuite bedrooms for comfort.

District:

Masouri

Building Area:

150,00 m²

Main-Use:

Residential

Features:

3 Bedrooms

2 Bathrooms

Garage

Swimming pool option





Let's Talk

For more information about the project, availability, or to arrange a meeting, please use the details below.

A member of our team will be happy to assist you.

Contact

Main Office

Kalymnos, Pothia 85200

Mail

info.ininvestments@gmail.com

Phone Number

+30 6940755776

